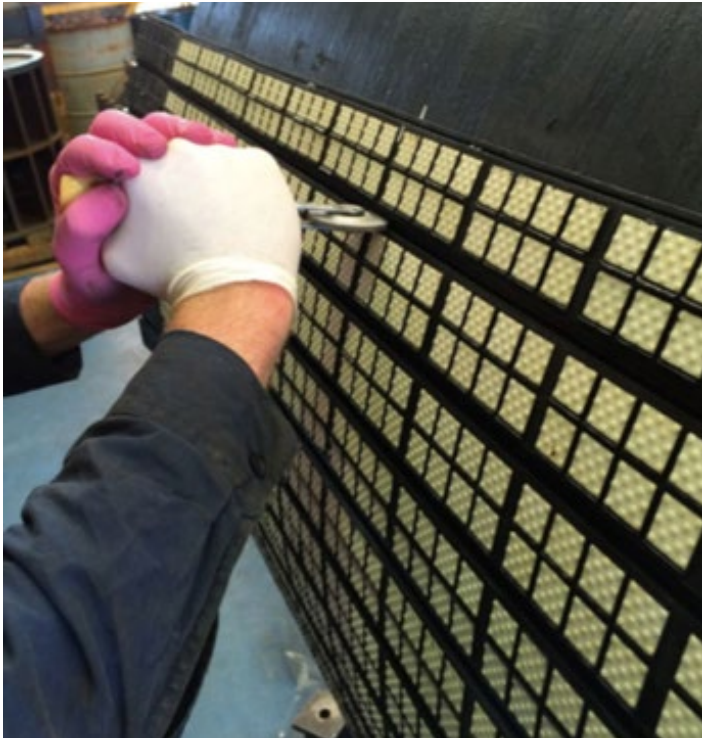


## STITCHING WHEEL

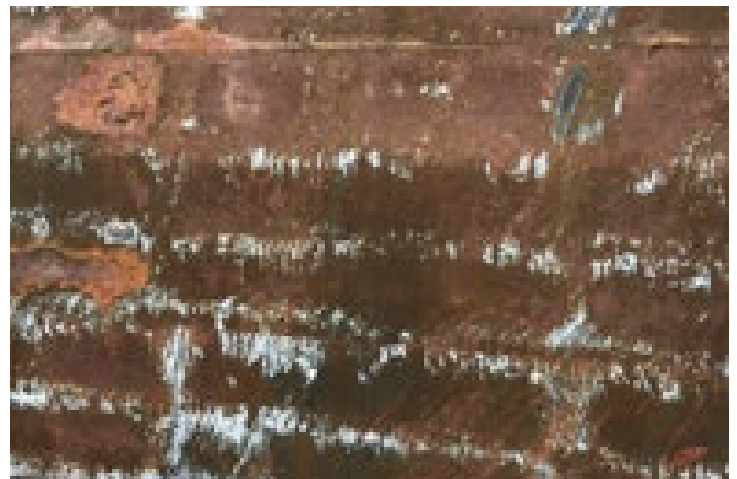


Lagging designs have sipes and grooves. One of the most important aspects on the lagging application is to obtain a reliable adhesion. Pressure applied to the lagging during the application is very important.

Stitching wheels are used to apply pressure on the narrow grooves and sipes.

### Features

- 1.) 1" Dia x 1/8" Wide Stitcher 3 mm x 50 mm\
- 2.) Easy of use
- 3.) Increased adhesion on lagging sipes and grooves.
- 4.) Suitability for different operators



Pulley shell with adhesion failure on the grooves